

# Pressure Hoses



## Super Ultraflex



General purpose air and water hose with a highly distinctive yellow & blue stripes, optimum flexibility, resilience & kink resistance.

Exceeds AS/NZ2554 Class B for burst pressure, wall thickness, abrasion resistance, weathering resistance, low temperature flexibility, ozone resistance and bond strength.

### Applications

Suitable for general purpose air & water supply. Also suitable for the conveyance of liquids, gases and some chemicals. Ideal for high pressure air lines and compressors. Inner wall: black, outer wall: yellow with blue stripe.

Nominal		Working		Burst		Weight Kg/m	Coil Lengths in Metres
I.D. (mm)	O.D. (mm)	Pres. @ 20°C Mpa	P.S.I.	Pres. @ 20°C Mpa	P.S.I.		
6	12.8	2.0	290	8.0	1,160	0.13	20, 100s, 300r
8	14.8	2.0	290	8.0	1,160	0.16	20, 100s, 300r
10	16.6	2.0	290	8.0	1,160	0.17	10, 15, 20, 30 80s, 100, 300r
12.5	19.3	2.0	290	8.0	1,160	0.19	20, 55s, 100, 250r
20	29.0	1.6	230	6.4	920	0.45	20, 80r, 100, 100r
25	34.6	1.6	230	6.4	920	0.62	20, 75r, 100,
32	43.4	1.6	230	6.4	920	1.15	20, 60
38	50.6	1.6	230	6.4	920	1.56	20, 40
50	64.6	1.6	230	6.4	920	2.40	20, 40

## Standard AW ~ Yellow



A general purpose safety yellow air & water hose, with excellent flexibility, kink resistance and toughness.

Meets AS/NZ2554 Class B. Excellent abrasion resistance makes the hose ideal for the more demanding applications.

### Applications

Suitable for all general purpose air, water and some chemical applications. Inner wall: black, outer wall: yellow.

Nominal		Working		Burst		Weight Kg/m	Coil Lengths in Metres
I.D. (mm)	O.D. (mm)	Pres. @ 20°C Mpa	P.S.I.	Pres. @ 20°C Mpa	P.S.I.		
6	11.0	1.6	230	6.4	920	0.10	20, 100, 300r
10	16.4	1.6	230	6.4	920	0.18	20, 100
12.5	18.9	1.6	230	6.4	920	0.22	20, 100
19	26.5	1.6	230	6.4	920	0.38	20, 100r
25	34.4	1.6	230	6.4	920	0.62	20, 100
32	42.0	1.6	230	6.4	920	0.90	20, 100
39	49.0	1.0	145	6.4	920	1.07	20, 60

## Blue Coldflex



For air, water and fluid transfer where low temperature flexibility is required. Oil mist resistance makes the hose the ideal choice for nail guns and other air operated hand tools.

Meets AS/NZ2554 Class B.

### Applications

Air lines to all pneumatic tools and portable equipment. Inner wall: black, outer wall: smooth blue.

Nominal		Working		Burst		Weight Kg/m	Coil Lengths in Metres
I.D. (mm)	O.D. (mm)	Pres. @ 20°C Mpa	P.S.I.	Pres. @ 20°C Mpa	P.S.I.		
6	11.5	2.0	290	8.0	1,160	0.13	20, 100, 300r
8	14.0	2.0	290	8.0	1,160	0.13	20, 100, 300r
10	16.6	2.0	290	8.0	1,160	0.18	20, 30, 70s, 100, 200r
12.5	18.9	2.0	290	8.0	1,160	0.22	20, 55s, 100, 200r
19	26.5	1.6	230	6.4	920	0.51	20, 100r
25	34.4	1.6	230	6.4	920	0.72	20, 100



# Pressure Hoses

## Ultra Air



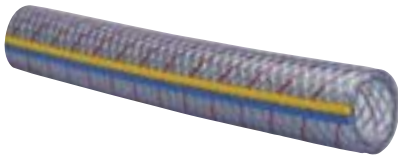
A flexible, light, low cost air line. Good oil mist resistance makes this the ideal choice for portable compressor air lines.

Inner wall: black, outer wall: smooth blue

Can be custom branded.

Nominal		Working		Burst		Weight Kg/m	Coil Lengths in Metres
I.D. (mm)	O.D. (mm)	Pres. @ 20°C Mpa	P.S.I.	Pres. @ 20°C Mpa	P.S.I.		
10	15.0	1.6	232	4.8	696	0.19	20, 30, 100, 200, 250r

## TMP II



The hose is highly flexible but kink resistant with a highly distinctive dual striping.

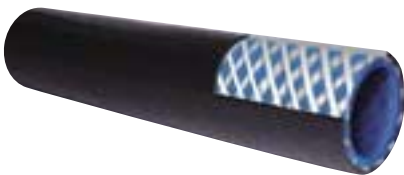
A translucent multi purpose food contact hose. It meets AS2070 1999, with a food contact inner and outer covering.

### Applications

Suitable for air, water, food and beverage liquids, semi liquids and petroleum based products. Inner wall: clear, outer wall: clear with yellow & blue stripes.

Nominal		Working		Burst		Weight Kg/m	Coil Lengths in Metres
I.D. (mm)	O.D. (mm)	Pres. @ 20°C Mpa	P.S.I.	Pres. @ 20°C Mpa	P.S.I.		
6	10.2	1.4	200	5.6	800	0.08	20, 100s, 300r
8	12.4	1.4	200	5.6	800	0.10	20, 100s, 300r
10	15.0	1.4	200	5.6	800	0.14	20, 80s, 300r
12.5	18.1	1.4	200	5.6	800	0.19	20, 55s, 100, 250r
16	22.8	1.4	200	5.6	800	0.30	20, 100
20	27.6	1.4	200	5.6	800	0.40	20, 80r, 100
25	33.4	1.4	200	5.6	800	0.54	20, 75r, 100
32	41.8	1.2	175	4.8	700	0.97	20, 60
38	49.8	1.2	175	4.8	700	1.32	20, 40
50	64.2	0.9	131	3.6	524	2.12	20, 40

## Sprayflex 300



A premium hose designed for medium pressure weedicide, pesticide and general chemical transfer. Its distinctive blue inner tube is a PVC/Nitrile blend, giving excellent resistance to most hydrocarbon solvents including aromatics, resulting in an extended life in the most demanding applications. The black outer cover is also chemical and ultraviolet light resistant.

### Applications

Transferring diluted weedicides, pesticides in general agricultural and horticultural applications. Inner wall: blue, outer wall: smooth black.

Nominal		Working		Burst		Weight Kg/m	Coil Lengths in Metres
I.D. (mm)	O.D. (mm)	Pres. @ 20°C Mpa	P.S.I.	Pres. @ 20°C Mpa	P.S.I.		
8	14.4	2.1	297	8.2	1,190	0.15	20, 100s, 200r
10	16.4	2.1	297	8.2	1,190	0.19	20, 80s, 300r
12.5	19.0	2.1	297	8.2	1,190	0.22	20, 100, 55s, 250r
20	27.5	2.1	297	8.2	1,190	0.42	20, 100
25	35.2	2.1	297	8.2	1,190	0.63	20, 100
32	43.0	2.1	297	8.2	1,190	0.66	20, 60
38	52.0	2.1	297	8.2	1,190	1.35	20, 60

## Super AG Spray ~ Red



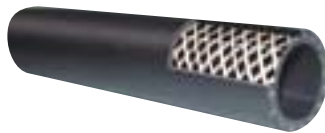
A premium hose designed for high pressure weedicide and pesticide transfer operations.

### Applications

Resistance to most chemicals and hydrocarbon based solvents making it suited to a wide range of applications. Inner wall: clear, outer wall: smooth red.

Nominal		Working		Burst		Weight Kg/m	Coil Lengths in Metres
I.D. (mm)	O.D. (mm)	Pres. @ 20°C Mpa	P.S.I.	Pres. @ 20°C Mpa	P.S.I.		
10	17.0	4.0	580	16.0	2,320	0.18	20, 100
12.5	20.3	4.0	580	16.0	2,320	0.28	20, 100

## Drum Pump ~ Black



Petrol and oil resistant hose with excellent flexibility. The PVC/Nitrile blend inner tube is highly resistant to hydrocarbons including aromatics. Excellent resistance to UV light ensures a long life. Good low temperature flexibility. A three metre retail display pack is also available.

### Applications

Dispensing fuels from overhead tanks and drums. Inner wall: black, outer wall: smooth black

\* 25mm now includes twin antstatic copper wires for increased safety when used to transfer volatile solvents.

Nominal		Working		Burst		Weight Kg/m	Coil Lengths in Metres
I.D. (mm)	O.D. (mm)	Pres. @ 20°C Mpa	P.S.I.	Pres. @ 20°C Mpa	P.S.I.		
19	27.0	1.0	145	4.0	580	0.36	20, 50s, 100
*25	33.5	1.0	145	4.0	580	0.55	3, 20, 60

## PR ~ Anti-Static ~ Petrol



A superior petrol resistant hose with a blue PVC/Nitrile blend inner tube for excellent resistance to unleaded fuels. All sizes incorporate twin copper anti-static wires for added safety.

### Applications

Dispensing oil, greases, petrol (including unleaded), diesel and home heating fuel. Ideal as a tanker delivery hose. Inner wall: blue PVC/Nitrile blend, outer wall: ribbed black with anti-static wires.

Nominal		Working		Burst		Weight Kg/m	Coil Lengths in Metres
I.D. (mm)	O.D. (mm)	Pres. @ 20°C Mpa	P.S.I.	Pres. @ 20°C Mpa	P.S.I.		
25	34.0	1.3	193	5.3	770	0.60	20, 100
32	42.0	1.2	175	4.8	700	0.80	20, 60
40	52.4	1.0	145	4.0	580	1.20	20, 40



# Pressure Hoses

## Fras



Fire resistant anti static hose with unique 3 layer construction that offers optimum performance and handling characteristics.

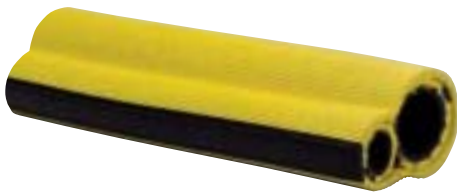
Manufactured to AS2660 Class A (1991) and AS/NZ2554 Class A.

### Application

Underground air and water mining hose. Inner wall: black, outer wall: ribbed yellow with black stripe.

Nominal		Working		Burst		Weight Kg/m	Coil Lengths in Metres
I.D. (mm)	O.D. (mm)	Pres. @ 20°C Mpa	P.S.I.	Pres. @ 20°C Mpa	P.S.I.		
10	18.0	2.1	305	8.4	1,220	0.25	20, 100
12.5	20.9	2.1	305	8.4	1,220	0.26	20, 30, 33, 100, 200r
20	29.4	2.1	305	8.4	1,220	0.58	20, 30, 100
(300psi)							
25	34.8	2.1	305	8.4	1,220	0.71	30, 33, 100
(500 psi)							
25	34.8	3.4	500	13.6	2,000	0.72	20, 30, 33, 100, 200
38	48.8	2.1	305	8.4	1,220	1.19	20, 40, 150, 200
50	62.4	2.1	305	8.4	1,220	1.80	20, 40, 100

## Mine Bolt



It is manufactured to AS2660 Class A (1991) and AS/NZ2554 Class A.

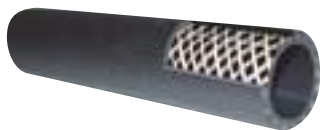
### Application

Underground air and water mining hose. Inner wall: black, outer wall: ribbed yellow with black stripe.

Fire resistant anti static twin hose with 12.5mm and 25 mm hoses permanently coupled together as one hose. Each hose has a unique 3 layer construction that offers optimum performance and handling characteristics.

Nominal		Working		Burst		Weight Kg/m	Coil Lengths in Metres
I.D. (mm)	O.D. (mm)	Pres. @ 20°C Mpa	P.S.I.	Pres. @ 20°C Mpa	P.S.I.		
12.5 / 25	20.9 / 34.8	2.1	305	8.4	1,220	1.51	100, 150

## Fire Reel Hose ~ Black



Manufactured to AS/NZ1221. The hose is lightweight, flexible, resistant to UV light and has self extinguishing properties.

### Applications

Stationary or mobile hose reels in fire control systems located in commercial or public buildings. Inner wall: black, outer wall: ribbed black.

Nominal		Working		Burst		Weight Kg/m	Coil Lengths in Metres
I.D. (mm)	O.D. (mm)	Pres. @ 20°C Mpa	P.S.I.	Pres. @ 20°C Mpa	P.S.I.		
19	26.0	1.0	145	4.0	580	0.36	36, 100
25	31.5	1.0	145	4.0	580	0.55	36, 100

# Pressure Hoses



## Divers ~ Air Breathing



Approved braided divers air breathing hose for professional and sports diving. Also suitable for breathing apparatus for spray booths and sand blasting.

Conforms to AS2299 and AS/NZ1716. Outer cover pricked for added safety.

### Application

Diving, air breathing applications. Inner wall: white, outer wall: smooth yellow.

Nominal		Working		Burst		Weight Kg/m	Coil Lengths in Metres
I.D. (mm)	O.D. (mm)	Pres. @ 20°C Mpa	P.S.I.	Pres. @ 20°C Mpa	P.S.I.		
8	14.3	1.6	235	6.4	930	0.14	50,100,300r
10	17.0	2.5	365	10.0	1,450	0.22	50,100,300r

## Estate ~ Bluline



Highly flexible premium hose for watering parks and gardens. With high visibility and two distinctive blue stripes, it is kink, burst and UV light resistant.

### Applications

All commercial parks, gardens and turf watering applications. Ideal as a general cold water wash down hose in cattle yards and dairies. Inner wall: black, outer wall: smooth white with blue stripes.

Nominal		Working		Burst		Weight Kg/m	Coil Lengths in Metres
I.D. (mm)	O.D. (mm)	Pres. @ 20°C Mpa	P.S.I.	Pres. @ 20°C Mpa	P.S.I.		
12.5	19.0	1.0	145	4.0	580	0.22	20, 100
19	26.5	1.0	145	4.0	580	0.40	20, 100
25	34.0	1.0	145	4.0	580	0.58	20, 80r, 100
32	42.5	1.0	145	4.0	580	0.85	20, 75r, 100
38	49.5	1.0	145	4.0	580	1.11	20, 60

## Pastoral White



A ribbed cold water wash down hose and general purpose water hose. Good flexibility and abrasion resistance makes the hose the ideal choice for dairy washdown or general parks and gardens irrigation.

### Applications

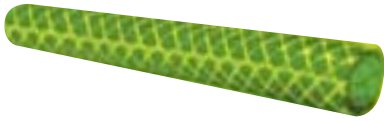
Parks and gardens, general rural use. Inner wall: black, outer wall: ribbed white.

Nominal		Working		Burst		Weight Kg/m	Coil Lengths in Metres
I.D. (mm)	O.D. (mm)	Pres. @ 20°C Mpa	P.S.I.	Pres. @ 20°C Mpa	P.S.I.		
12.5	19.0	1.2	175	4.8	700	0.22	20, 55s, 100
19	26.5	1.2	175	4.8	700	0.37	20, 50s, 100r
25	34.0	1.0	145	4.0	580	0.58	20, 30s, 100
32	43.0	1.0	145	4.0	580	0.90	20, 100



# Pressure Hoses

## Aquamate



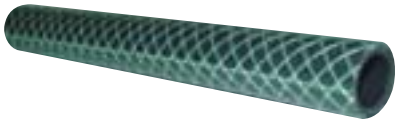
A premium quality, higher pressure heavy duty garden hose with excellent flexibility and kink resistance. With its higher quality construction and excellent resistance to UV light, the hose can be expected to give outstanding service for many years.

### Applications

General domestic and commercial use. Inner wall: translucent green, outer wall: translucent yellow.

Nominal		Working		Burst		Weight Kg/m	Coil Lengths in Metres
I.D. (mm)	O.D. (mm)	Pres. @ 20°C Mpa	P.S.I.	Pres. @ 20°C Mpa	P.S.I.		
12	16.5	0.8	110	3.0	435	0.15	20, 35, 100
18.5	24.5	0.8	110	3.0	435	0.28	20, 35, 100r
25	31.0	0.8	110	3.0	435	0.44	20, 35, 100

## Garden Hose ~ Green



A high quality reinforced flexible garden hose. Excellent kink resistance and good UV light resistance.

### Applications

General domestic use. Inner wall: black, outer wall: translucent green.

Nominal		Working		Burst		Weight Kg/m	Coil Lengths in Metres
I.D. (mm)	O.D. (mm)	Pres. @ 20°C Mpa	P.S.I.	Pres. @ 20°C Mpa	P.S.I.		
12	16.5	0.6	90	2.4	350	0.15	20, 30, 100, 200r
19	25.2	0.6	90	2.4	350	0.31	20, 30, 100r
25	32.0	0.6	90	2.4	350	0.39	50

## Hot Wash ~ White



Highest grade hose for hot washdown use in the food industry. The thermoplastic rubber smooth outer cover is highly resistant to lactic acid and fats.

### Applications

Hot washdown of all food preparation and retail areas, where milk, fats and other food products are present. Inner wall: white, outer wall: white, with smooth TPR surface. Rated to 85°C when used at low pressure.

Nominal		Working		Burst		Weight Kg/m	Coil Lengths in Metres
I.D. (mm)	O.D. (mm)	Pres. @ 20°C Mpa	P.S.I.	Pres. @ 20°C Mpa	P.S.I.		
12.5	19.7	2.0	290	8.0	1,160	0.28	20, 100
19	28.0	1.8	250	7.0	1,015	0.48	20, 100

## Drinking Water Hose



For the transfer of drinking water. Manufactured to AS2070 1999 and AS4020 to ensure that there is no taint or smell imparted to the drinking water.

### Application

Transferring potable water to caravans, boats or drinking containers. Inner wall: clear, outer wall: smooth white with blue stripes.

Nominal		Working		Burst		Weight Kg/m	Coil Lengths in Metres
I.D. (mm)	O.D. (mm)	Pres. @ 20°C Mpa	P.S.I.	Pres. @ 20°C Mpa	P.S.I.		
12	17.0	0.8	110	3.0	440	0.23	20, 60s, 100

# Pressure Hoses & Tubing



## Washing Machine Hose



### Application

Washing machine water inlet hoses, hot and cold.  
Inner wall: black, outer wall: ribbed white

Assemblies are a non stocked item, and minimum order quantities may apply.

Designed for hot and cold water connections to washing machines. Will not mark painted walls or enamelled appliances.

Nominal		Working		Burst		Weight Kg/m	Coil Lengths in Metres
I.D. (mm)	O.D. (mm)	Pres. @ 20°C Mpa	P.S.I.	Pres. @ 20°C Mpa	P.S.I.		
10	17.5	2.0	290	8.0	1,160	0.23	20, 60s, 100, 200r
12.5	20.5	2.0	290	8.0	1,160	0.25	20, 45s, 100, 200r

## Lilac Reclaimed Water Hose



### Application

Watering parks and gardens with reclaimed water. Also suitable for use as a domestic garden hose. Inner wall: black, outer wall: smooth lilac.

A hose specially formulated for use with reclaimed water. Its Lilac cover complies with the international standard for use with reclaimed water. The hose has "RECLAIMED WATER NOT FOR DRINKING" printed along its length for added safety.

Nominal		Working		Burst		Weight Kg/m	Coil Lengths in Metres
I.D. (mm)	O.D. (mm)	Pres. @ 20°C Mpa	P.S.I.	Pres. @ 20°C Mpa	P.S.I.		
19	25.5	1.0	145	4.0	580	0.27	20, 100
25	34.4	1.0	145	4.0	580	0.60	20, 100

## Eva - Beverage Tube



### Application

Dispensing beverages, including beer and mixed drinks. Transferring most fluid and semi fluid foodstuffs. Wall: translucent.

Formulated from Ethylene Vinyl Acetate, a food grade compound, it will not taint foodstuffs and beverages. It has good flexibility, a mirror smooth bore and excellent abrasion resistance

Nominal		Working		Weight Kg/m	Coil Lengths in Metres
I.D. (mm)	O.D. (mm)	Pres. @ 20°C Mpa	P.S.I.		
4	7.0	0.28	40	7	100
5	8.0	0.28	40	12	100
6	10.0	0.28	40	16	100
8	12.5	0.28	40	20	100
10	15.0	0.28	40	46	100
12.5	17.5	0.28	40	66	100

## Anfo Blast Tube



Wall: black with orange stripe.

For the transfer of ANFO explosives. Conforms to AS2187.2 - 1993

	Nominal		Weight Kg/m	Coil Lengths in Metres
	I.D. (mm)	O.D. (mm)		
Rigid	19	26.0	270	30, 60
	25	33.0	445	30, 60
Flexible	19	26.0	390	30, 60
	25	33.0	642	30, 60